

1

2

3

4

5

6

A

B

C

D

A

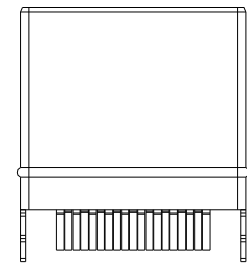
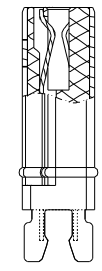
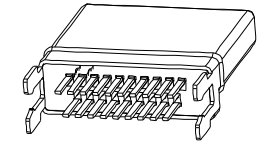
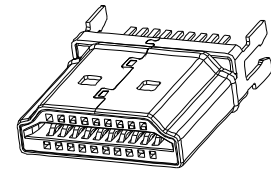
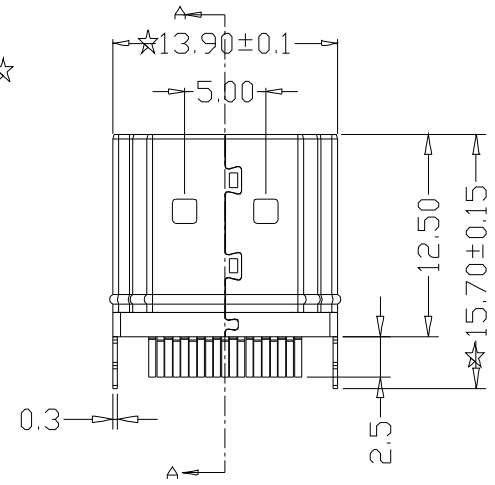
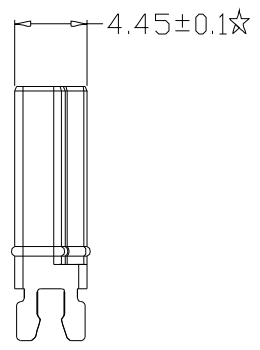
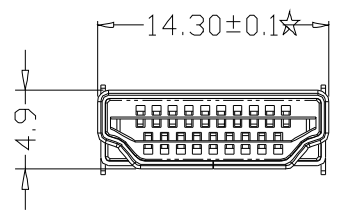
B

C

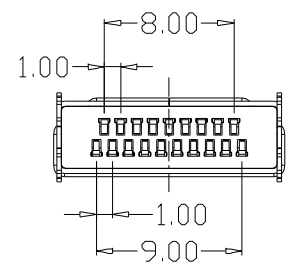
D

REVISIONS

REV.	DESCRIPTION	DATE	REVISED BY



SECTION A-A



备注:

- 1. 胶芯材质: LCP
- 2. 外壳材质: 铁料 (黄铜)
- 3. 端子材质: 磷铜
- 4. 外壳镀层: Cu: 80U*Min, Ni: 80U*Min
- 5. 端子镀层: Ni: 60U*Min, Au: G/F (15U*), Sn: 60U*Min
- 6. ☆代表重点尺寸



BossConn

深圳博士联电子有限公司

GENERAL TOLERANCE

X	±0.20	X°	±2°
XX	±0.15	XX°	±1°
XXX	±0.13	XXX°	±0.5°

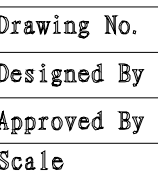
Description

Customer Name	
Customer No.	
Produce No.	HDA-M-CN01
Date	2012. 07. 20

HDMI 黑胶公头 夹板式 端子外露2.5 短脚

Drawing No.	王超
Designed By	
Approved By	
Scale	FIT

Third Angle Projection



Units

<input type="checkbox"/> MM	REV
<input type="checkbox"/> Inch	A/0