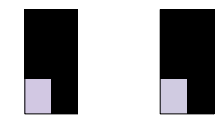
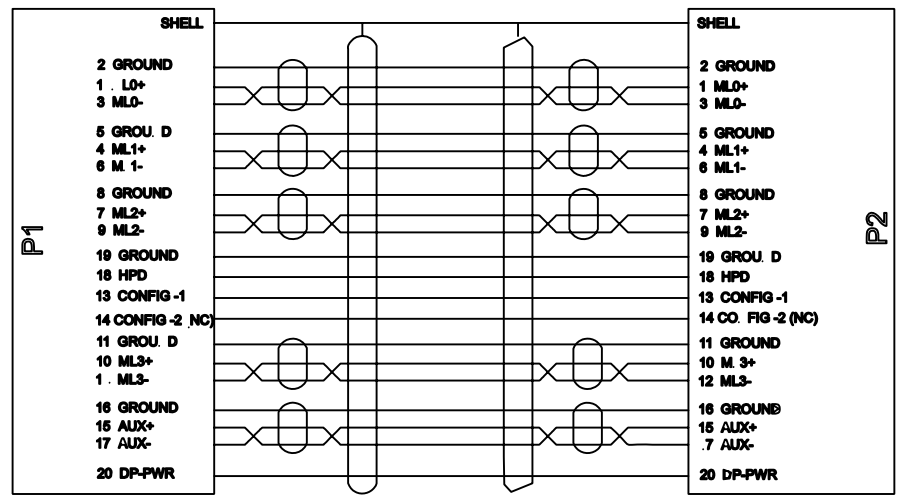
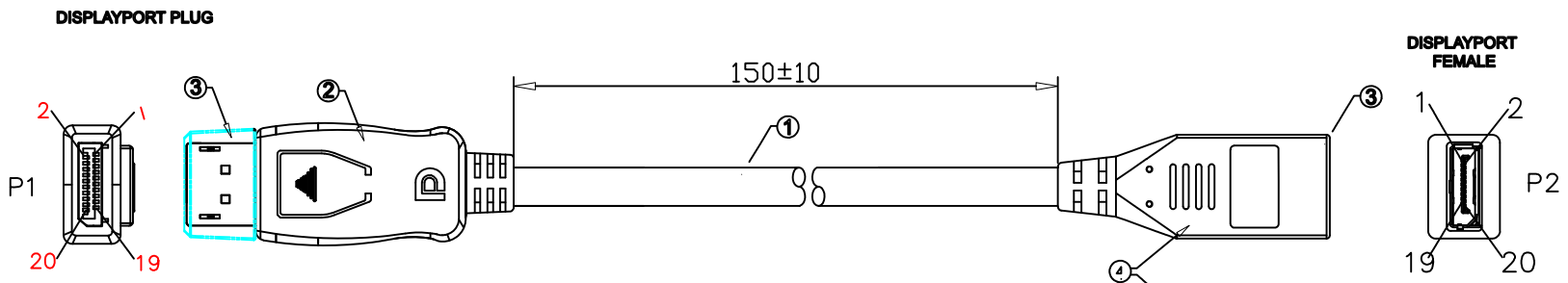


RoHS Compliant

| ECN NO | REV | DESCRIPTION | DATE | REVISER | APPD |
|--------|-----|-------------|------|---------|------|
|--------|-----|-------------|------|---------|------|



| ITEM | NAME | DESCRIPTION | QTY |
|------|---------|--|-----|
| 4 | PLASTIC | P1 & P2 CONNECTOR OVERMO. D BLACK PVC | AR |
| 3 | CONN. | DISPLAYPORT CONNECTOR,FEMALE R. CEPTACLE ASSEMBLY TYPE SUPPORT LATCH M. CHA IC | 1 |
| 2 | CONN. | DISPLAYPORT CONNECTOR,MALE | 1 |
| 1 | CABLE | UL20276 32AWG*5C EAM+D)+32AWG*5C A+B Displayport Cable | 1 |

| | | | | |
|---------------|--|--|-------|------|
| INNERMOLD | TOLERANCE UNSPECIFIED L/EAR: X ±1.0 X.X ±0.5 X.XX ±0.15 X.XXX ±0.05 -/GULAR: ±0.5 | | SCALE | UNIT |
| | NON | | mm | |
| OVERMOLD | DRAWN: Andy 10/04/02 | NAME Displayport(M) to Displayport(F) Cable | SHEET | |
| | DESIGNER: | | 1/1 | |
| | CHECKED: | DRAWING NO. BSC-DP-MF-01 | REV | |
| | APPROVED: | | A | |