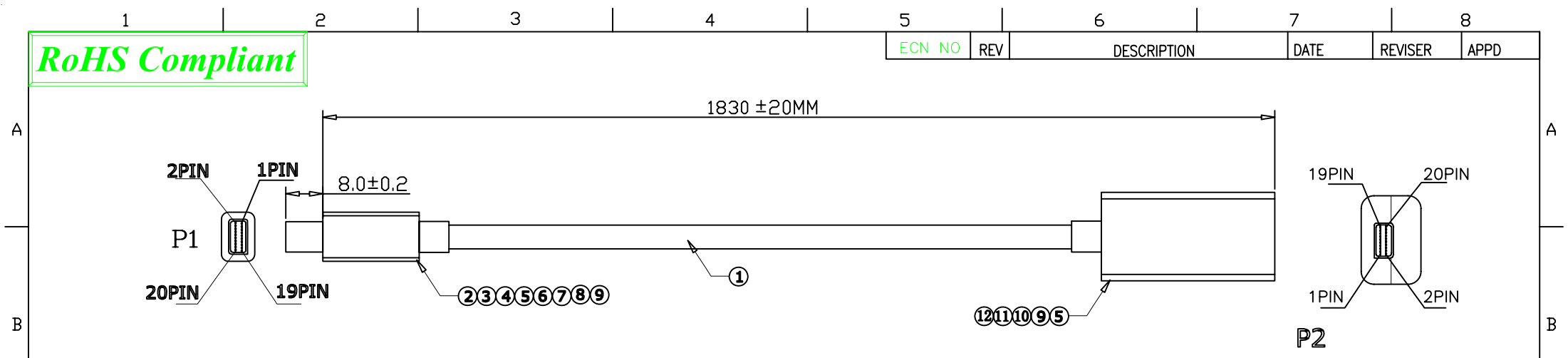


RoHS Compliant

ECN NO	REV	DESCRIPTION	DATE	REVISER	APPD
--------	-----	-------------	------	---------	------



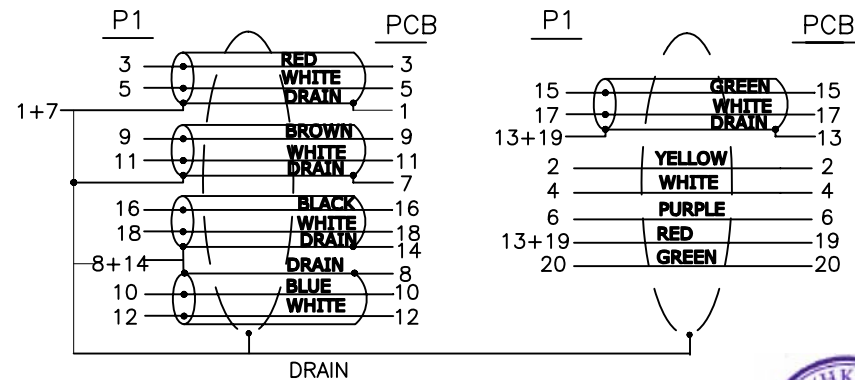
ELECTRICAL TEST:

- 1.100% OPEN SHORT SHORT & MIS WIRE TEST
- 2.CONTACT RESISTANCE:1 OHM(MAX)
- 3.INSULATION RESISTANCE:10M OHM(MIN)
- 4.HI-POT TEST:DC 300V/10ms

注意事项:

- 1.P1端均脱外被13MM,芯线比剪保留7-8MM,编织和麦拉剪除,组装铁壳,地线绑在铁壳上点焊后成型SR.
- 2.mini display port端第3,4,5,6,9,10,11,12,20PIN套0.6*3MM套管.

PIN Assignment



NO	DESCRIPTION	Q'TY	UNIT
12	A2-R021326 mini DisplayPort Port F 夹板式 黑色胶芯 PIN镀金 带PCB	1	pcs
11	A6-R104216 mini DisplayPort(焊线式) F ABS外下壳 白色	1	pcs
10	A6-R104215 mini DisplayPort(焊线式) F ABS外上壳 白色	1	pcs
9	A10-R075132 黑色热缩套管: φ 1.5*5mm 薄壁	6	pcs
8	A6-0000157 mini Display Port M 透明PVC防尘盖	1	pcs
7	A6-R104150 mini DisplayPort(焊线式) ABS外下壳 Apple白色	1	pcs
6	A6-R104149 mini DisplayPort(焊线式) ABS外上壳 Apple白色	1	pcs
5	A5-R047097 45P Apple白色PVC料 环保	8	g
4	A6-R021133 mini Display Port M 镀镍后铁壳	1	pcs
3	A6-R021132 MINI Display Port M 镀镍前铁壳	1	pcs
2	A2-R021292 MINI DisplayPort Port M 夹板式 白色胶芯 PIN镀金 带PCB	1	pcs
1	A4-R001624 Display Port UL20276 [32AWG(7/0.08TC)*1PR+EAM]*5+32AWG(7/0.08TC)*5C +AEB 85% (16/7/0.12AL) OD:4.8MM 白色(Apple白) L=1830MM	1	pcs

TOLERANCE <table border="1"> <thead> <tr> <th></th> <th>INCHES</th> <th>M/M</th> </tr> </thead> <tbody> <tr> <td>.X</td> <td>.015</td> <td>.30</td> </tr> <tr> <td>.XX</td> <td>.010</td> <td>.10</td> </tr> <tr> <td>.XXX</td> <td>.005</td> <td>.05</td> </tr> </tbody> </table>			INCHES	M/M	.X	.015	.30	.XX	.010	.10	.XXX	.005	.05	BossConn	
	INCHES	M/M													
.X	.015	.30													
.XX	.010	.10													
.XXX	.005	.05													
DRAWN: Andy 10/04/02 DESIGNER: CHECKED: APPROVED:		NAME Mini Displayport Male to Mini Displayport Female Cable DRAWING NO. BSC-MDP-MFCBL SCALE NON UNIT mm SHEET 1/1 REV A													