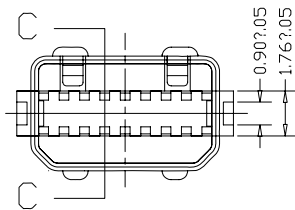
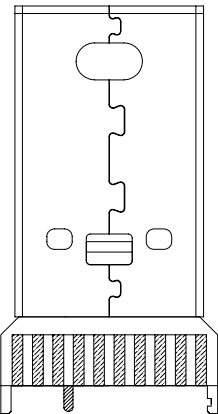
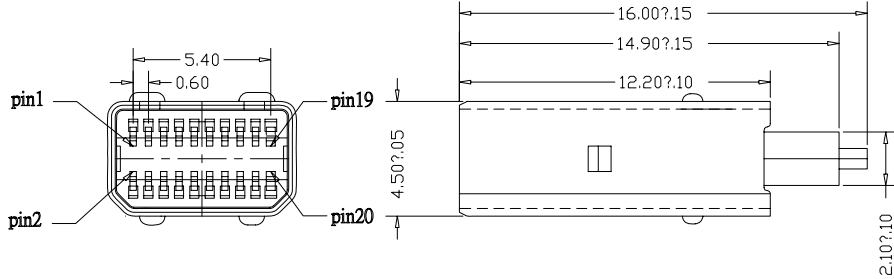
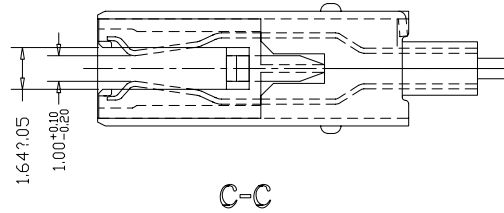
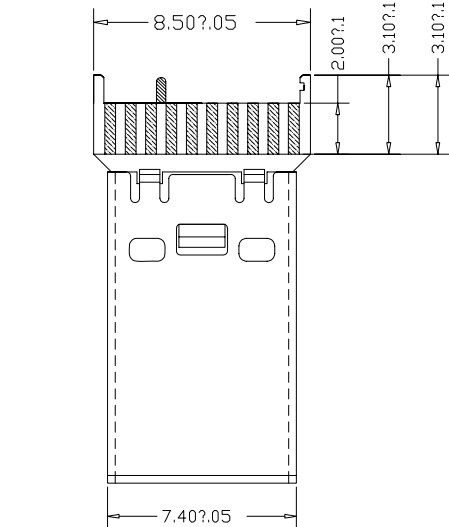


RoHS Compliant



Notes:

Material

Body: LCP, UL94V-0 Rated; Color: White Insertion
 (Molding): LCP, UL 94V-0 Rated;
 Shell: Brass.
 Plating: Nickel Plating
 Contact: Phosphor Bronze
 Plating: Tin Plating On Solder tail
 Gold Plating Over Nickel On Contact Area;

Electrical Specification

Operation Voltage: 30 VAC max.
 Current Rating : 0.5 Ampere Per contact.
 Contact Resistance : 30 Milliohms Max.
 Insulation Resistance : 100 Megohms Min.
 Dielectric Withstanding Voltage: 300v AC Min.

Mechanical

Insertion Force : 4.5Kg/f max.
 Withdrawal Force: 1.0~4.0Kg/f.
 Durability: 5,000 Cycles

Environmental

Operating Temperature: -40°C to +85°C
 How to Order

▼ = Places

TOLERANCES UNLESS

X ± 0.30	X° ± 3°
.X ± 0.20	.X° ± 2°
.XX ± 0.15	.XX° ± 1°
.XXX ± 0.05	.XXX° ± 0.5°

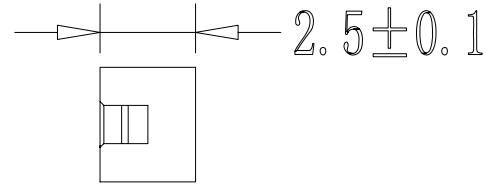
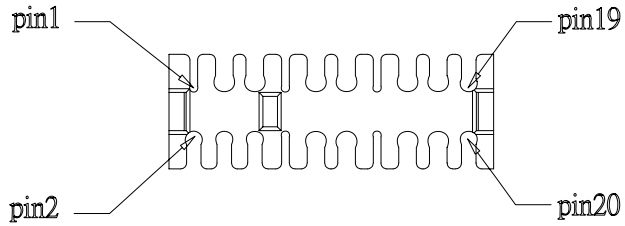
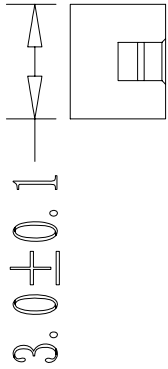
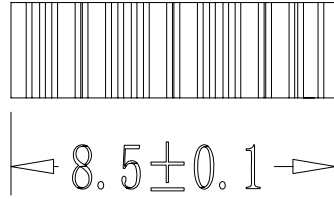


DESIGN: Jesse Zhou	DATE: 10.08.06	MINI Display Port SOLDER TYPE
CHECKED:	DATE:	
APPROVED:	DATE:	PART NO: MDP-M-CD02
		SIZE: A4
		REV: A

ECN. NO	REV	DATE	DESCRIPTION	CHANGED	APPROVED	UNIT: mm
	A	10.08.06	RELEASE	Jesse		



RoHS Compliant

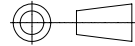


PIN 3.5.9.11.15.17.10.12.16.18 线径为0.5
 PIN 2.4.6.19.20 线径为0.4
 PIN 1.7.13.8.14 线径为0.2

ECN. NO	REV	DATE	DESCRIPTION	CHANGED	APPROVED
	A	10.08.06	RELEASE	Jesse	

▼ = Places
DIM NO. ☞
SCALE: 1:1
SHEET: 1 OF 1
UNIT: mm

TOLERANCES UNLESS	
X ± 0.30	X° ± 3°
.X ± 0.20	.X° ± 2°
.XX ± 0.15	.XX° ± 1°
.XXX ± 0.05	.XXX° ± 0.5°



BossConn

DESIGN: Jesse Zhou	DATE: 10.08.06	MINT Display Port Wire Clamp	
CHECKED:	DATE:	PART NO:	SIZE: A4
APPROVED:	DATE:	DWG NO:	REV: A