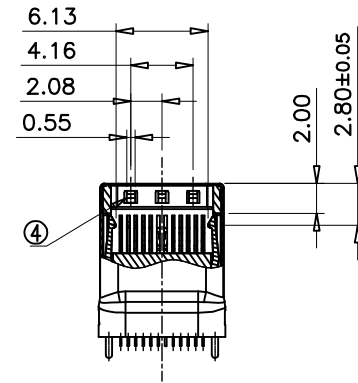
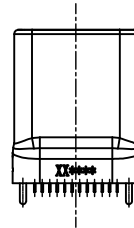
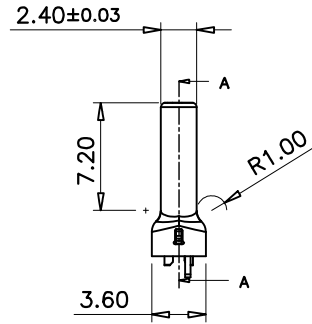
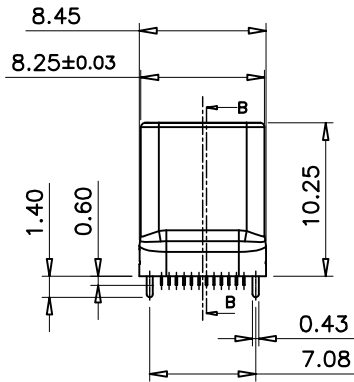
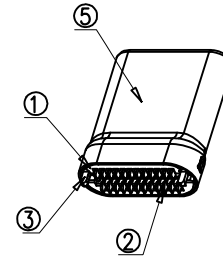
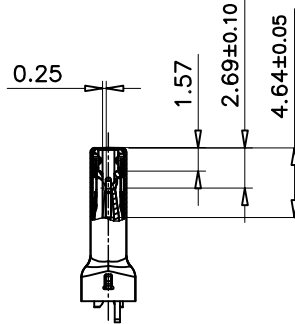
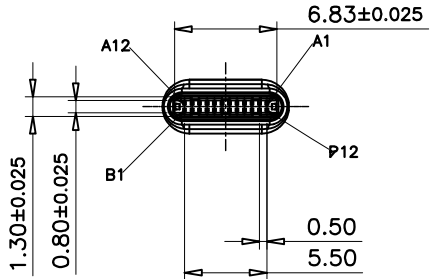
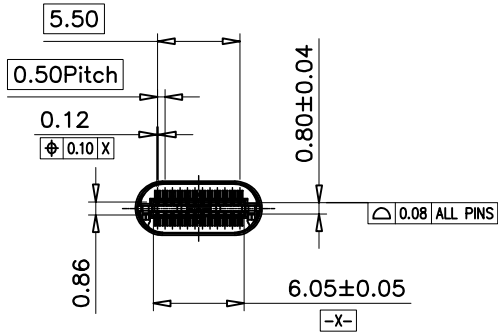


Halogen Free

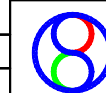
REV.	ECN NO.	LOCATION	DESCRIPTION	DATE	DESIGN
A			INITIAL RELEASE	07/06'2015	



SECTION A-A
SCALE 1:1

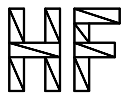


DIM	TOL	DIM	TOL
.x	±0.30	.x	±2'
.x	±0.25	.x	±1'
.xx	±0.15		



BossConn

DRAW NO.	CUSTOMER	DRAWING	DATE	TITLE: USB TYPE C PLUG WITH PCB SHELL (TUBE) ASSY FOR 3.0 WITH CABLE SHELL
	DESIGN:	PengJunian	07/06'2015	USB-type-c-3.0-CN01
	CHECK:	Pengguofeng	07/06'2015	SHEET: 1/3
REV. A	APPROVAL:	Pengguofeng	07/06'2015	SCALE: 1:1 UNIT: mm



Halogen Free

REV.	ECN NO.	LOCATION	DESCRIPTION	DATE	DESIGN
A			INITIAL RELEASE	07/06'2015	

NOTES:

1.MATERIAL

- 1①HSG: HIGH TEMPERATURE THERMOPLASTIC UL94V-0 BLACK;
- 1②CONTACT: COPPER ALLOY
- 1③LATCH: STAINLESS STEEL
- 1④EMI SPRING: STAINLESS STEEL
- 1⑤SHELL: STEEL
- 1⑥PCB: FR4 6 LAYERS PLATING GOLD COLOR:GREEN
- 1⑦CABLE SHELL: STEEL

2. FINISH:

- 2.1 CONTACT:
 - SEE TABLE MIN, Au PLATING ON CONTACT AREA.
 - 2.54um [100u"] MIN. TIN PLATING ON SOLDER TAIL AREA.
 - 1.27um [50u"] MIN.NICKEL.UNDERPLATING ON ALLOVER AREA.
- 2.2 SHELL
 - SEE TABLE
- 2.3 LATCH:
 - 2.54um [100u"] MIN. TIN PLATING ON SOLDER TAIL AREA.
 - 1.27um [50u"] MIN.NICKEL.UNDERPLATING ON ALLOVER AREA.
- 2.4 CABLE SHELL::
 - 1.27um [50u"] MIN. NI PLATING ON ALLOVER AREA.

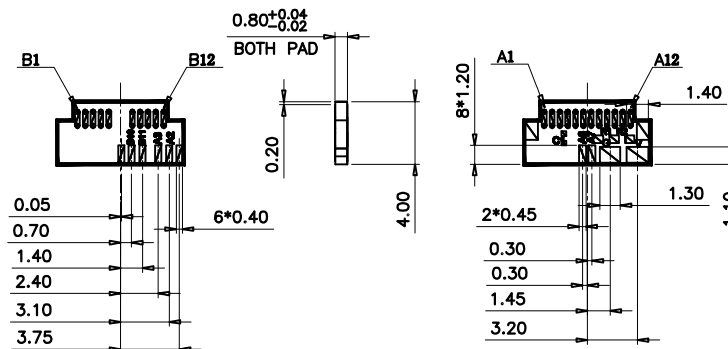
3. PART NUMBER INFORMATION:

024 ** T ** * HF

- HALOGEN CODE:
 - HF:HALOGEN FREE
- SHELL PLATING:
 - 0: PEARL NICKEL
 - 1: NICKEL
- LOGE:
 - 0: WITH LOGE
 - 1: WITHOUT LOGE
- HOUSING COLOR:
 - 0: BLACK
 - 1: WHITE
- PACKAGE CODE:
 - T: TRAY PACKING
- PLATING CODE:
 - 1: Au:30u"
 - 2: G/F
- ASSY MOLD:

- 6. PLUG WITH PCB CONN+CABLE SHELL(FOR 3.0)
- B. PLUG WITH PCB CONN+CABLE SHELL(FOR 3.0)(1.5A)
- C. PLUG WITH PCB CONN+CABLE SHELL(FOR 3.0)(3A)

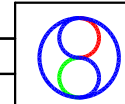
PIN NUMBER CODE:
024: 24PINS



P/N	NAME	RESISTOR VALUE
40-42415-024C*T***HF	FOR 3.0 (3A)	10K OHM
40-42415-024B*T***HF	FOR 3.0 (1.5A)	22K OHM
40-42415-0246*T***HF	FOR 3.0 (1A)	56K OHM

NOTE: PINS DESCRIPTION

A1	A11	A10	A9	A8	A7	A6	A5	A4	A3	A2	A1
GND	RX2-	RX2+	VBus	VBus1	D-	D+	CC	VBus	TX1+	TX1-	GND
GND	TX2+	TX2-	VBus	Vconn			SBU2	VBus	RX1-	RX1+	GND
B1	B2	B3	B4	B5	B6	B7	B8	B9	B10	B11	B12



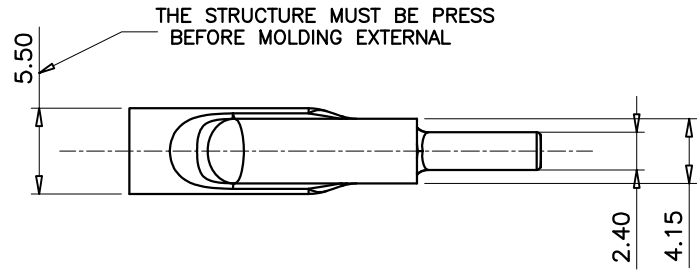
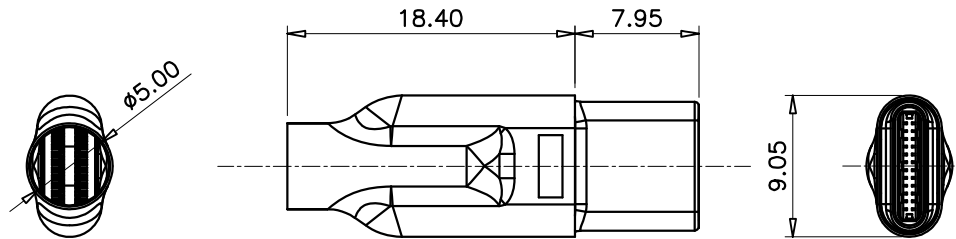
BossConn

DIM	TOL	DIM	TOL	DRAW NO.	CUSTOMER DRAWING		DATE	TITLE: USB TYPE C PLUG WITH PCB SHIELD (TUBE) ASSY FOR 3.0 WITH CABLE SHELL		
x.	±0.30	x.	±2'		REV. A	DESIGN:		07/06'2015	USB-type-c-3.0-CN01	
.x	±0.25	.x	±1'			CHECK:		07/06'2015	SHEET:	2/3
.xx	±0.15				APPROVAL:		07/06'2015	SCALE:	1:1	
								UNIT:	mm	



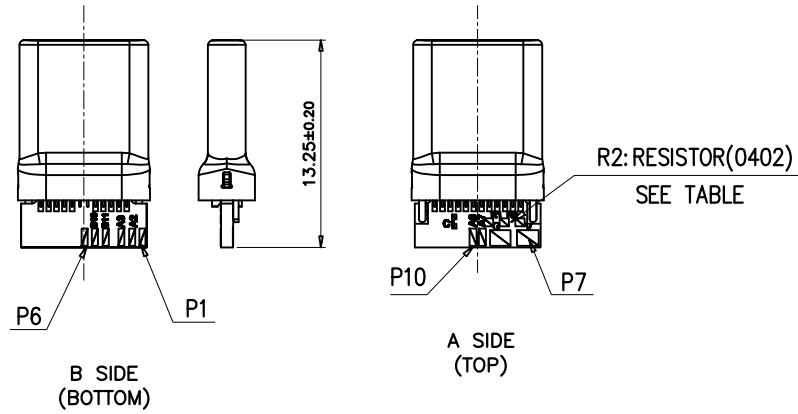
Halogen Free

REV.	ECN NO.	LOCATION	DESCRIPTION	DATE	DESIGN
A			INITIAL RELEASE	07/06'2015	



THE STRUCTURE MUST BE PRESS BEFORE MOLDING EXTERNAL

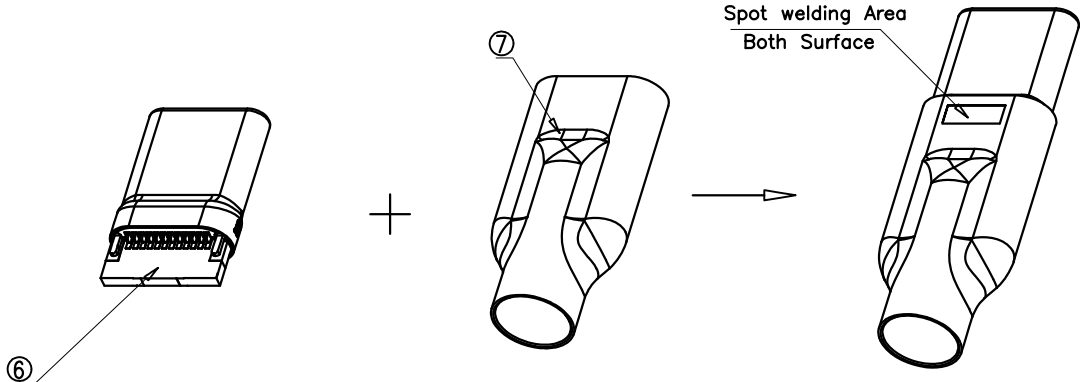
ASSEMBLED CABLE SHELL DIM DRAWING
NOTE: CABLE SHELL USE FOR CUSTOMER ASSEMBLING




CONTACT FIGURE:

CONN PIN	PCB PIN
A1;A12,B1,B12, SHELL	P1
A2	P2
A3	P3
B11	P4
B10	P5
A1;A12,B1,B12, SHELL	P6
A4;A9,B4,B9	P7
A1;A12,B1,B12, SHELL	P8
A7	P9
A6	P10

NOTE:
1、C1: CAPACITOR: 10nF 30V(0201)
2、ALL PAD NEED ADD TIN(THICK:0.10mm)



DIM	TOL	DIM	TOL
.x	±0.30	.x	±2'
.x	±0.25	.x	±1'
.xx	±0.15		



BossConn

CUSTOMER DRAWING	DATE	TITLE: USB TYPE C PLUG WITH PCB Shell (TUBE) ASSY FOR 3.0 WITH CABLE SHELL
DESIGN: Pengjunian	07/06'2015	USB-type-c-3.0-CN01
CHECK: Pengguofeng	07/06'2015	SHEET: 3/3
APPROVAL: Pengguofeng	07/06'2015	SCALE: 1:1 UNIT: mm

