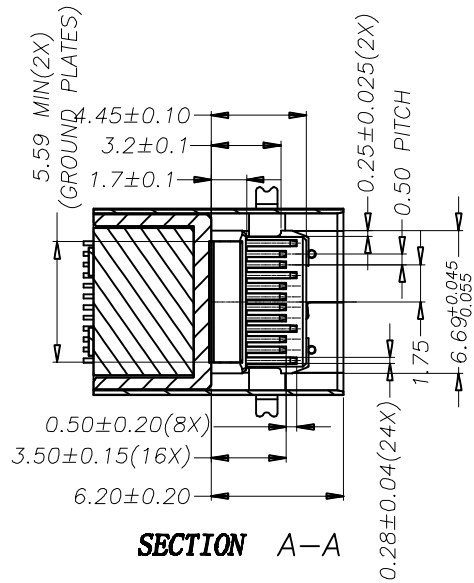
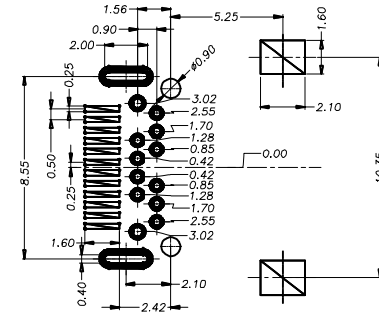
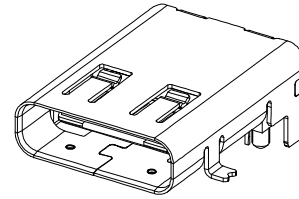
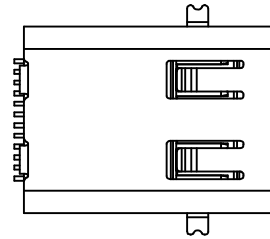


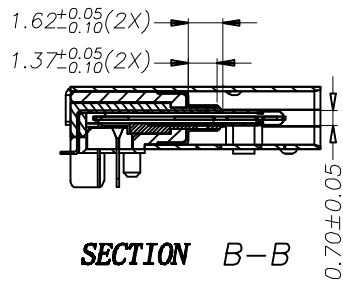
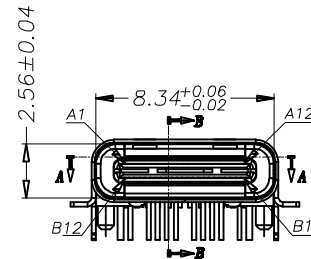
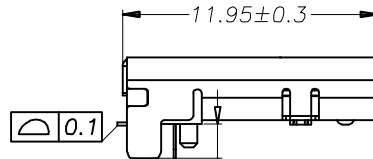
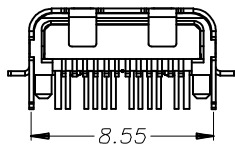
REV.	ECN NO OR DESCRIPTION	REVISED	DATE
▽	PROPOSE ONLY		



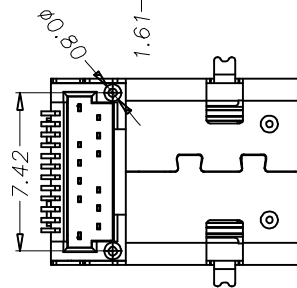
SECTION A-A



RECOMMENDED PCB LAYOUT(TOP VIEW)



SECTION B-B



NOTES:

- MATERIAL:
 - HOUSING:PA9T+30%G.F.
 - COUNT:C5191 1/2H
Copper Alloy,Tin plating overall a, Gold plating on contact area, Nickel under plating other all.
 - SHELL:SUS304
Tin plating overall a,Nickel under plating overall
- ELECTRICAL CHARACTERISTICS:
 - CONTACT CURRENT RATING:3A
 - LOW LEVEL CONTACT RESISTANCE:
40mOhms MAX.FOR VBUS,GND AND OTHER CONTACT
50mOhms MAX.AFTER ENVIRONMENT TEST.
- MECHANICAL CHARACTERISTICS:
 - DURABILITY:10000 CYCLES.
 - INSERTING 5N-20N MAX
 - EXTRACTION 5N-20N
 - OPERATING TEMPERATURE:-55°C TO+85°C
- MEET USB TYPE C STANDARD SPECIFICATION.
- PLEASE CONTACT SALES REPRESENTATIVE TO VERIFY PRODUCT DETAILS.

UNLESS OTHERWISE SPECIFIED TOLERANCES		BossConn		
DECIMALS:	ANGLES:	TITLE	USB TYPE-C Receptacle	
X :±0.5	X :±2°	DWN	PART NO.	USB3.1-CF-SMT-CN01
XX :±0.20	XX :±1°	CHKD	SCALE:1:1	UNIT: mm
XXX :±0.10		APVD	SIZE: A3	SHEET: 1 OF 1
CUSTOMER COPY				