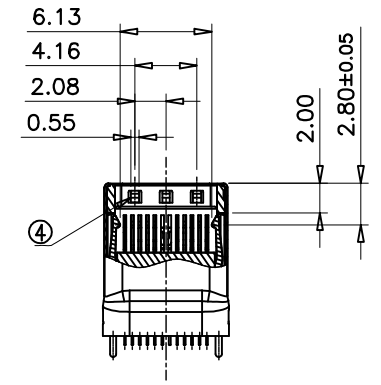
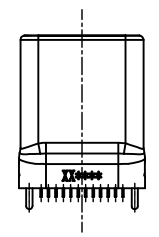
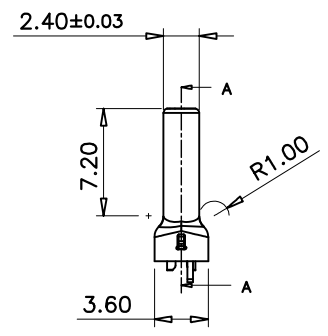
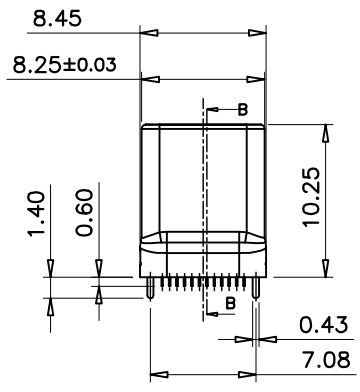
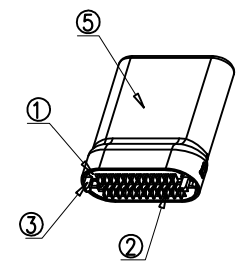
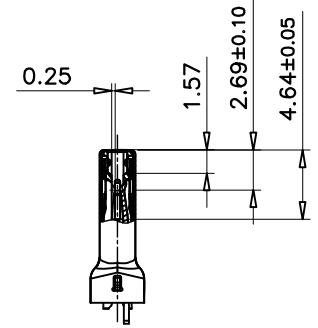
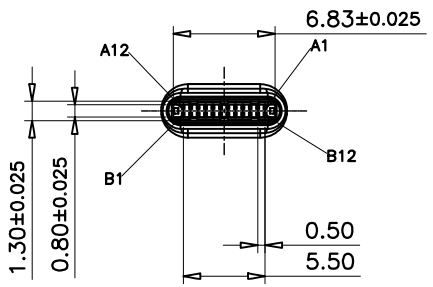
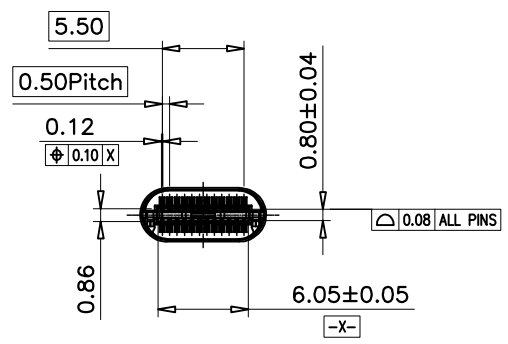


Halogen Free

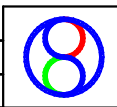
REV.	ECN NO.	LOCATION	DESCRIPTION	DATE	DESIGN
A			INITIAL RELEASE	07/06'2015	PengJunlan



SECTION A-A  
SCALE 1:1

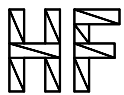


DIM	TOL	DIM	TOL
.x	±0.30	.x	±2'
.x	±0.25	.x	±1'
.xx	±0.15		



**BossConn**

DRAW NO.	CUSTOMER DRAWING	DATE	TITLE: USB TYPE C PLUG WITH PCB SHELL (TUBE) ASSY FOR 2.0 WITH CABLE SHELL
	DESIGN:	07/06'2015	USB-Type-c-2.0-CN01
	CHECK:	07/06'2015	SHEET: 1/3
REV. A	APPROVAL:	07/06'2015	SCALE: 1:1 UNIT: mm



Halogen Free

REV.	ECN NO.	LOCATION	DESCRIPTION	DATE	DESIGN
A			INITIAL RELEASE	07/06'2015	PengJunlan

NOTES:

1.MATERIAL

- 1①HSG: HIGH TEMPERATURE THERMOPLASTIC UL94V-0 BLACK;
- 1②CONTACT: COPPER ALLOY
- 1③LATCH: STAINLESS STEEL
- 1④EMI SPRING: STAINLESS STEEL
- 1⑤SHELL: STEEL
- 1⑥PCB: FR4 2 LAYERS PLATING GOLD COLOR:GREEN
- 1⑦CABLE SHELL: STEEL

2. FINISH:

2.1 CONTACT:

- SEE TABLE MIN, Au PLATING ON CONTACT AREA.
- 2.54um [100u"] MIN. TIN PLATING ON SOLDER TAIL AREA.
- 1.27um [50u"] MIN.NICKEL.UNDERPLATING ON ALLOVER AREA.

2.2 SHELL

SEE TABLE

2.3 LATCH:

- 2.54um [100u"] MIN. TIN PLATING ON SOLDER TAIL AREA.
- 1.27um [50u"] MIN.NICKEL.UNDERPLATING ON ALLOVER AREA.

2.4 CABLE SHELL::

- 1.27um [50u"] MIN. NI PLATING ON ALLOVER AREA.

3. PART NUMBER INFORMATION:

0\*\* \* \* T \* \* \* \* HF

HALOGEN CODE:

HF:HALOGEN FREE

SHELL PLATING:

0: PEARL NICKEL

1: NICKEL

LOGO:

0: WITH LOGO

1: WITHOUT LOGO

HOUSING COLOR:

0: BLACK

1: WHITE

PACKAGE CODE:

T: TRAY PACKING

PLATING CODE:

1: Au:30u"

2: G/F

ASSY MOLD:

4. PLUG WITH PCB CONN+CABLE SHELL(FOR 2.0&MICRO 2.0 REC)(1A)

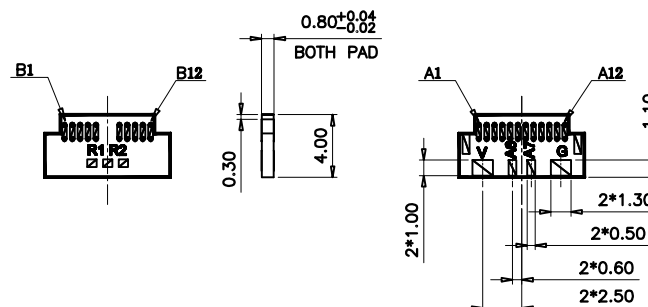
D. PLUG WITH PCB CONN+CABLE SHELL(FOR 2.0&MICRO 2.0 REC)(1.5A)

E. PLUG WITH PCB CONN+CABLE SHELL(FOR 2.0&MICRO 2.0 REC)(3A)

PIN NUMBER CODE:

024: 24PINS

016: 16PINS(Only USE FOR USB 2.0 SERIES)



B Side

A Side

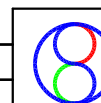
NOTE: PINS DESCRIPTION FOR 40-42415-024\*\*T\*\*\*HF

A1	A11	A10	A9	A8	A7	A6	A5	A4	A3	A2	A1
GND	RX2-	RX2+	VBus	VBus1	D-	D+	CC	VBus	TX1+	TX1-	GND
GND	TX2+	TX2-	VBus	Vconn			SBU2	VBus	RX1-	RX1+	GND
B1	B2	B3	B4	B5	B6	B7	B8	B9	B10	B11	B12

NOTE: PINS DESCRIPTION FOR 40-42415-016\*\*T\*\*\*HF(ONLY USED FOR 2.0 SERIES)

A1	BLANK	BLANK	A9	A8	A7	A6	A5	A4	BLANK	BLANK	A1
GND			VBus	VBus1	D-	D+	CC	VBus			GND
GND	BLANK	BLANK	VBus	Vconn			SBU2	VBus	BLANK	BLANK	GND
B1			B4	B5	B6	B7	B8	B9			B12

DIM	TOL	DIM	TOL
.x	±0.30	.x	±2°
.x	±0.25	.x	±1°
.xx	±0.15		



# BossConn

CUSTOMER DRAWING		DATE	TITLE: USB TYPE C PLUG WITH PCB SHLL (TRUS) ASSY FOR 2.0 WITH CABLE SHELL
DESIGN:		07/06'2015	USB-Type-C-2.0-CN01
CHECK:		07/06'2015	SHEET: 2/3
APPROVAL:		07/06'2015	SCALE: 1:1 UNIT: mm

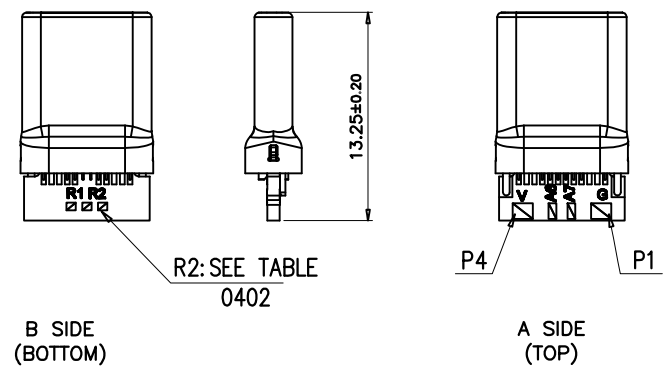
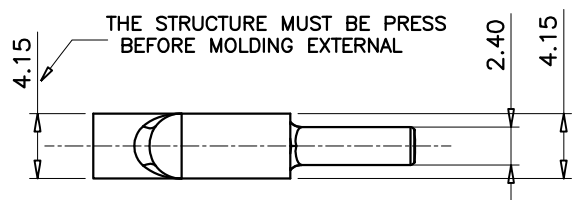
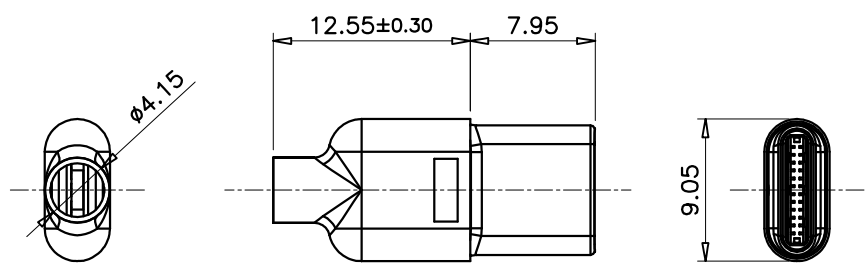
DRAW NO.

REV. A



Halogen Free

REV.	ECN NO.	LOCATION	DESCRIPTION	DATE	DESIGN
A			INITIAL RELEASE	07/06'2015	PengJunlan



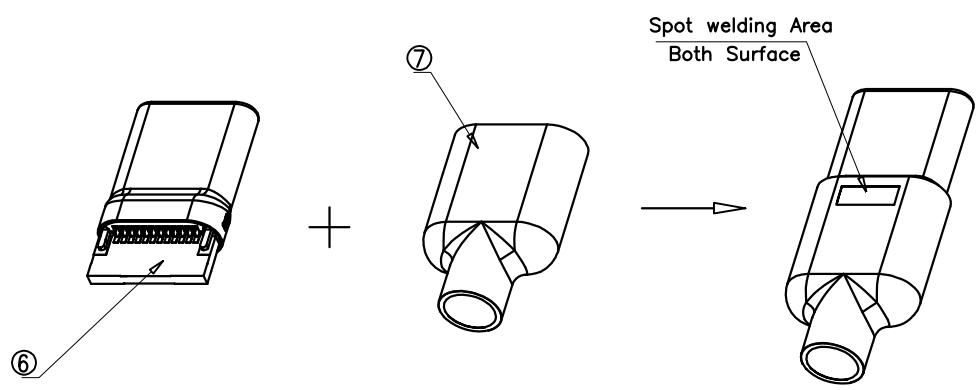
ASSEMBLED CABLE SHELL DIM DRAWING  
NOTE: CABLE SHELL USE FOR CUSTOMER ASSEMBLING

CONTACT FIGURE:

CONN PIN	PCB PIN
A1,A12,B1,B12,SHELL	P1
A7	P2
A6	P3
A4;A9,B4,B9	P4

NOTE:  
1, ALL PAD NEED ADD TIN(THICK:0.10mm)

P/N	NAME	RESISTOR VALUE
	FOR 2.0 MICRO 2.0 REC (3A)	10K OHM
	FOR 2.0 MICRO 2.0 REC (1.5A)	22K OHM
	FOR 2.0 MICRO 2.0 REC (1A)	56K OHM



DIM	TOL	DIM	TOL		<h1>BossConn</h1>		
x	±0.30	x	±2'		CUSTOMER DRAWING	DATE	TITLE: USB TYPE C PLUS WITH PCB SHELL (TUBE) ASSY FOR 2.0 WITH CABLE SHELL
.x	±0.25	.x	±1'		DESIGN:	07/06'2015	USB-Type-C-2.0-CN01
.xx	±0.15				CHECK:	07/06'2015	SHEET: 3/3
				DRAW NO.	APPROVAL:	07/06'2015	SCALE: 1:1
				REV. A			UNIT: mm