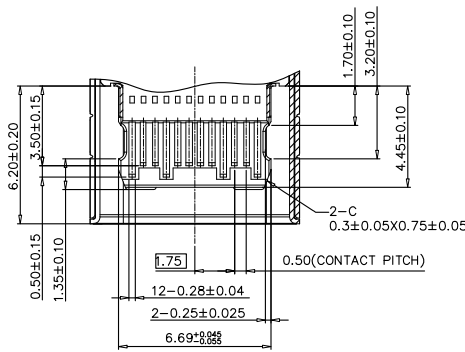
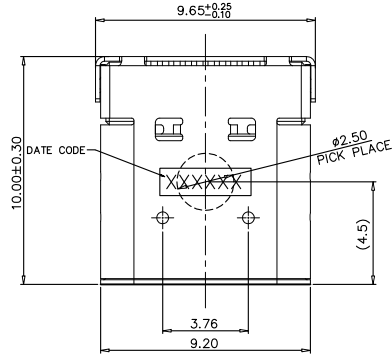
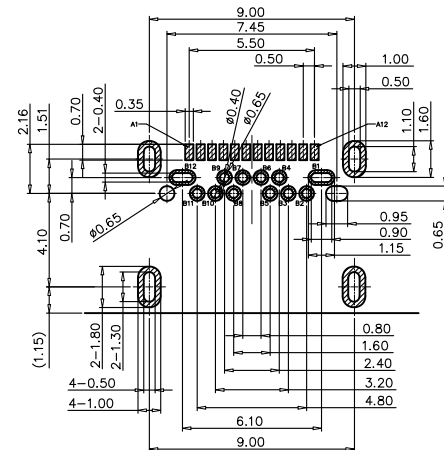


RoHS Compliant

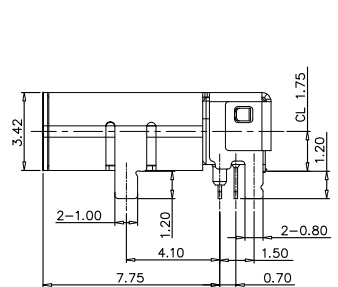
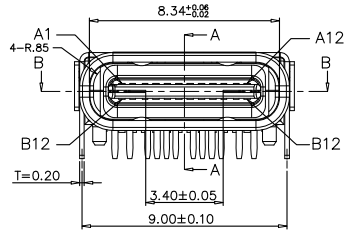
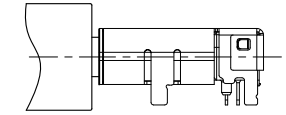


SECTION B-B

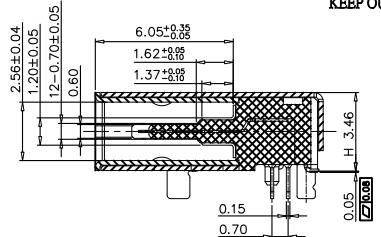


RECOMMEND P.C.B LAYOUT (COMPONENT SIDE)
TOLERANCE FOR PCB LAYOUT IS ±0.05
KEEP OUT AREA

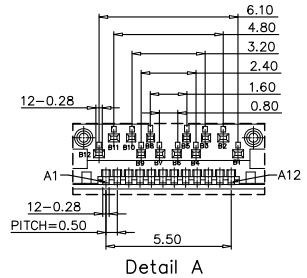
Pin	Signal Name	Mating Sequence	Pin	Signal Name	Mating Sequence
A1	GND	First	B12	GND	First
A2	SSTXp1	Second	B11	SSRXp1	Second
A3	SSTXn1	Second	B10	SSRXn1	Second
A4	V _{bus}	First	B9	V _{bus}	First
A5	CC1	Second	B8	SBU2	Second
A6	Dp1	Second	B7	Dn2	Second
A7	Dn1	Second	B6	Dp2	Second
A8	SBU1	Second	B5	CC2	Second
A9	V _{bus}	First	B4	V _{bus}	First
A10	SSRXn2	Second	B3	SSTXn2	Second
A11	SSRXp2	Second	B2	SSTXp2	Second
A12	GND	First	B1	GND	First
SHELL	GND		SHELL	GND	



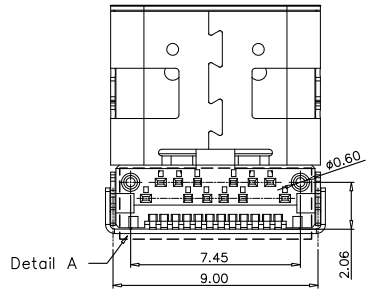
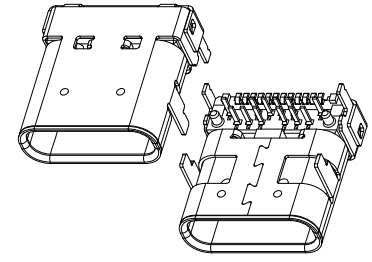
SECTION A-A



- NOTE:
- MATERIAL:
 - INSULATOR: HIGH TEMPERATURE PLASTIC UL 94 V-0;
 - CONTACT: COPPER ALLOY(T=0.15mm)
 - SHELL: STAINLESS STEEL(T=0.20mm)
 - ELECTRICAL CHARACTERISTICS:
 - CONTACT RESISTANCE: 40mΩ Max FOR INITIAL, 10mΩ CHANGE AFTER TEST. MEASURE AT 20mV, 100mA.
 - CONTACT CURRENT RATING: 5A FOR V_{bus} PIN; 1.25A FOR V_{com} PIN.
 - DIELECTRIC WITHSTANDING VOLTAGE: 100V AC R.M.S.
 - INSULATION RESISTANCE 100MΩ Min
 - OPERATING TEMPERATURE: -40°C ~ 85°C
 - MECHANICAL CHARACTERISTICS:
 - MATING FORCE: 5~20 N.
 - UNMATED FORCE: 8~20N AFTER TEST
 - DURABILITY: 10,000 CYCLES
 - PLATING:
 - TERMINAL CONTACT: (SEE TAB) GOLD PLATING ALL OVER 50u" Min NICKEL AND 80u"Min Tin ALL OVER 50u" Min NICKEL ON SOLDER AREA
 - SHELL: 50u" Min. NICKEL ALL OVER,



Detail A



Detail A

PART NO: 0 X S 1 - X 1 X
 1: RoHS Compliant
 1: TRAY PACKAGE
 2: TAPE REEL PACKAGE

- MALE & FEMALE
 FEMALE
 HOUSING COLOR:
 5: BLACK 9: BLUE
 FLOW NO.: S1
 端子电码
 1: GUL FLASH 2: 3u" GOLD
 3: 5u" GOLD 4: 10u" GOLD
 5: 15u" GOLD 6: 30u" GOLD

▼ = Places	TOLERANCES UNLESS	
DIM NO. ⑧	X ± 0.50	X° ± 3'
SCALE: FIT	.X ± 0.30	.X° ± 2'
	.XX ± 0.20	.XX° ± 1'
	.XXX ± 0.10	.XXX° ± 0.5'

BossConn

DESIGN: DATE: 2015.01.05

CHECKED: DATE:

APPROVED: DATE:

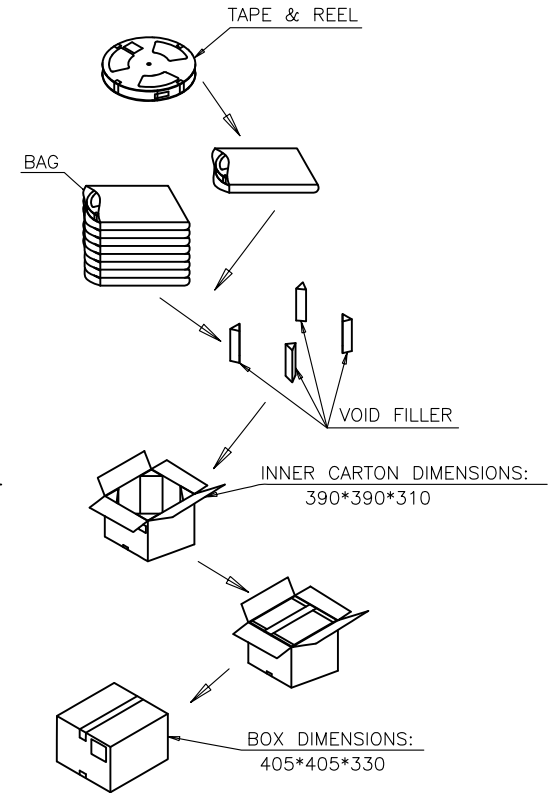
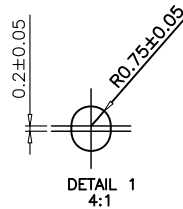
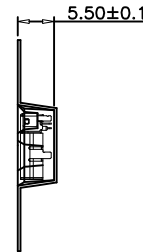
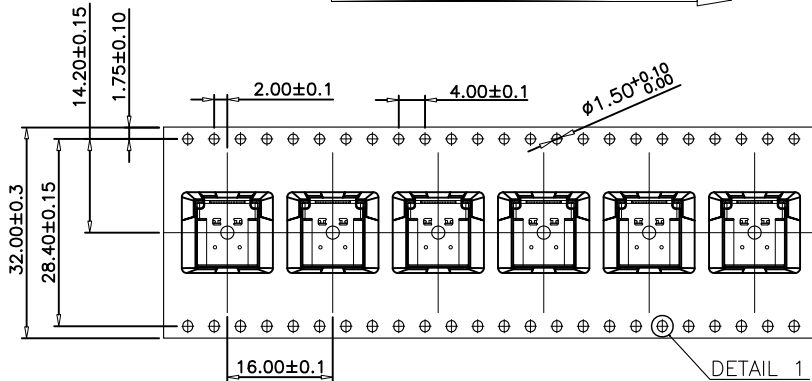
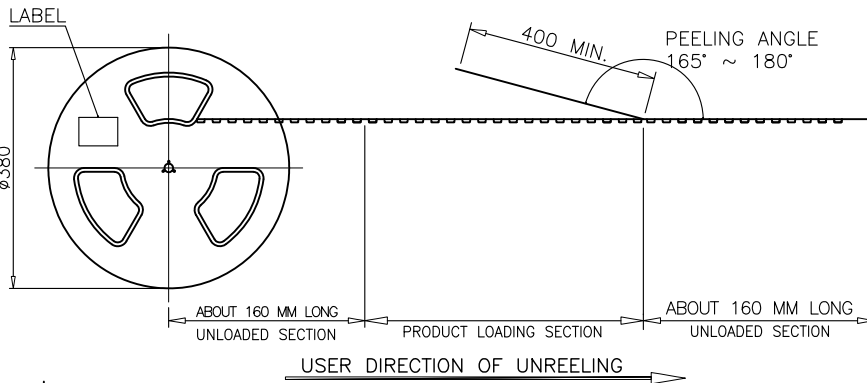
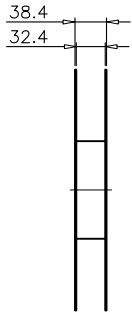
USB 3.1 C TYPE Female
CL1.75 H3.45mm DIP TYPE

PART NO: USB31-CF-SMT-CN03
DWG NO:

SIZE: A4
REV: A

ECN. NO	REV	DATE	DESCRIPTION	CHANGED	APPROVED	UNIT: mm
	A	15.01.05	NEW RELEASE			

RoHS Compliant



NOTE:

- 1.MATERIAL:
 BOX: FIBREBOARD, CORRUGATED, DOUBLE WALL.
 TAPE: POLYSTYRENES, HEAT-RESISTANT TEMPERATURE: 120°C, BLACK COLOR.
 REEL: POLYSTYRENES, HEAT-RESISTANT TEMPERATURE: 70°C, BLUE COLOR.
 BAG: POLYETHYLENE, HEAT-RESISTANT TEMPERATURE: 100°C.
- 2.PEELING STRENGTH: 0.1 ~ 1.3 N (10 ~ 130 GRAMS)
- 3.PEELING SPEED: 300 mm/min.
- 4.EACH BAG SHALL BE INCLUDED DESICCANT.

1000	8	8000 PCS	-- KG	-- KG
PCS/ REEL	REELS/ CARTON	QUANTITY	GROSS WEIGHT	NET WEIGHT

▼ = Places	TOLERANCES UNLESS	
DIM NO. Ⓢ	X ± 0.50	X ^c ± 3'
SCALE: FIT	.X ± 0.30	.X ^c ± 2'
SHEET: 1 OF 1	.XX ± 0.20	.XX ^c ± 1'
UNIT: mm	.XXX ± 0.10	.XXX ^c ± 0.5'

BossConn

DESIGN: DATE: 2015.01.05
 CHECKED: DATE:
 APPROVED: DATE:

PART NO: USB3.1 C TYPE Female
 CL1.75 H3.45mm DIP TYPE
 DWG NO: SIZE: A4
 REV: A

—	A	15.01.05	NEW RELEASE			
ECN. NO	REV	DATE	DESCRIPTION	CHANGED	APPROVED	UNIT: mm